

c h o r u s

L E G R A N D S P E C T A C L E D U S O N



CHORUS 725



CHORUS 715



CHORUS 710

• Description	3-way bass reflex floor standing loudspeaker	2-1/2 way bass reflex floor standing loudspeaker	2-way bass reflex floor standing loudspeaker
• Drivers	<ul style="list-style-type: none"> • Two 6-1/2" Polyglass cone woofers with 1" coil • 6-1/2" Polyglass mid-bass with 1" coil • 1" Treated Titanium inverted dome tweeter with 3/4" coil 	<ul style="list-style-type: none"> • Two 6-1/2" Polyglass cone mid-bass with 1" coil • 1" Treated Titanium inverted dome tweeter with 3/4" coil 	<ul style="list-style-type: none"> • 6-1/2" Polyglass cone mid-bass with 1" coil • 1" Treated Titanium inverted dome tweeter with 3/4" coil
• L.F. (-6dB point)	37 Hz	40 Hz	45 Hz
• Frequency response (+/- 3dB)	47 Hz - 22 kHz	49 Hz - 22 kHz	51 Hz - 22 kHz
• Efficiency (2,8 V / 1 m)	92 dB	91.5 dB	89.5 dB
• Nominal impedance	8 ohms	8 ohms	8 ohms
• Minimum impedance	4.1 ohms	3.4 ohms	3.9 ohms
• Crossover frequencies	400 Hz et 2400 Hz	350 Hz et 2400 Hz	2400 Hz
• Maximal power handling with musical program	150 W	125 W	80 W
• Recommended amplifier	25 - 125 W	25 - 100 W	20 - 60 W
• Total dimensions (H x W x D)	980 x 200 x 300 mm	930 x 200 x 270 mm	855 x 200 x 270 mm
• Net weight	17.4 kg	14.3 kg	12.5 kg
• Cabinet finishes	<ul style="list-style-type: none"> • Black Ash • Cherry • Calvados 	<ul style="list-style-type: none"> • Black Ash • Cherry • Calvados 	<ul style="list-style-type: none"> • Black Ash • Cherry • Calvados
• Front cover	Black acoustically transparent cloth	Black acoustically transparent cloth	Black acoustically transparent cloth
• Port	One front circular port	One front circular port	One front circular port
• Positioning and accessories	Floor standing (Four rubber feet and four spikes included)	Floor standing (Four rubber feet and four spikes included)	Floor standing (Four rubber feet and four spikes included)
• Rear connectors	Two pairs of gold plated binding posts	Two pairs of gold plated binding posts	Single pair of gold plated binding posts



CHORUS LCR 700

1/2-way bass reflex LCR loudspeaker

Two 6-1/2" Polyglass cone shielded mid-bass
1" Treated Titanium inverted dome shielded tweeter with 3/4" coil

5 Hz

3 Hz - 22 kHz

1 dB

ohms

ohms

0 Hz et 2400 Hz

5 W

- 100 W

1) x 210 x 320 mm

2 kg

Black Ash
Cherry
Calvados

Black acoustically transparent cloth

One front slotted ports

Horizontal or vertical stand mounting

Two pairs of gold plated binding posts



CHORUS 707

2-way bass reflex stand mounting loudspeaker

• 7" Polyglass cone mid-bass with 1" double coil
• 1" Treated Titanium inverted dome tweeter with 3/4" coil

45 Hz

54 Hz - 22 kHz

91.5 dB

8 ohms

3.6 ohms

2400 Hz

100 W

25 - 80 W

490 x 230 x 310 mm

10.2 kg

• Black Ash
• Cherry
• Calvados

Black acoustically transparent cloth

One front circular port

On shelves or on L40 or L60 stand

Two pairs of gold plated binding posts



CHORUS 706

2-way bass reflex bookshelf loudspeaker

• 6-1/2" Polyglass cone mid-bass with 1" coil
• 1" Treated Titanium inverted dome tweeter with 3/4" coil

50 Hz

57 Hz - 22 kHz

89.5 dB

8 ohms

4 ohms

2400 Hz

75 W

20 - 60 W

370 x 200 x 260 mm

6.2 kg

• Black Ash
• Cherry
• Calvados

Black acoustically transparent cloth

One front slotted port

On shelves or on L60 stand

Single pair of gold plated binding posts



CHORUS 705

2-way bass reflex bookshelf loudspeaker

• 5-1/2" Polyglass cone mid-bass with 1" coil
• 1" Treated Titanium inverted dome tweeter with 3/4" coil

60 Hz

67 Hz - 22 kHz

88.5 dB

8 ohms

4.1 ohms

2400 Hz

60 W

15 - 50 W

300 x 182 x 207 mm

4.3 kg

• Black Ash
• Cherry
• Calvados

Black acoustically transparent cloth

One front slotted port

On shelves or on L60 stand

Single pair of gold plated binding posts

JMlab® is a trademark of Focal-JMlab®. Due to the continual evolution of its products, Focal-JMlab® may change the technical specifications for these products without notice. Items may vary from those shown in the photographs.



CHORUS CC 700

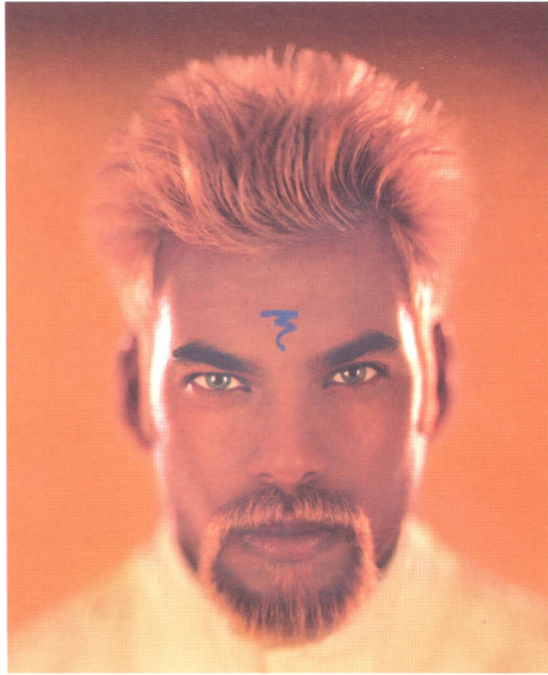


CHORUS SR 700



CHORUS SW 700

description	2-1/2 way sealed central channel loudspeaker	2-way sealed sound effects loudspeaker	front firing self powered sealed subwoofer
features	<ul style="list-style-type: none"> • Two 6-1/2" Polyglass cone shielded mid-bass • 1" Treated Titanium inverted dome shielded tweeter 	<ul style="list-style-type: none"> • 6-1/2" Polyglass cone mid-bass with 1" coil • 1" Treated Titanium inverted dome tweeter with 3/4" coil 	<ul style="list-style-type: none"> • 11" Polyglass cone woofer with 1-1/2" coil
C ₀ (-6dB point)	55 Hz	55 Hz	30 Hz
frequency response (3dB)	61 Hz - 22 kHz	69 Hz - 22 kHz	35 Hz - 180 Hz
efficiency (2.8 V / 1 m)	91.5 dB	91 dB	-
nominal impedance	8 ohms	8 ohms	-
minimum impedance	3 ohms	3.1 ohms	-
crossover frequencies	500 Hz et 2400 Hz	2400 Hz	Adjustable at 18 dB/oct
maximum power handling with official program	100 W	75 W	Amplified - 125 W
recommended amplifier	20 - 80 W	20 - 60 W	-
dimensions (H x W x D)	180 x 500 x 280 mm	320 x 300 x 130 mm	408 x 325 x 500 mm
weight	7.9 kg	5 kg	20 kg
available finishes	<ul style="list-style-type: none"> • Black Ash • Cherry • Calvados 	<ul style="list-style-type: none"> • Black Ash • Cherry • Calvados • White ash 	<ul style="list-style-type: none"> • Black Ash • Cherry • Calvados
net cover	Black acoustically transparent cloth	Black or white acoustically transparent cloth	Black acoustically transparent cloth
mounting accessories	Above or below TV	Wall mounting (Wall mount system)	Floor standing (twin core mains cord)
connectors	Single pair of gold plated binding posts	Single pair of gold plated binding posts	2 filtered line inputs (RCA) Direct input for 5.1 (RCA) 2 direct line outputs (RCA)



THE SPIRIT OF SOUND

Taking a vision, whole-heartedly believing in it, developing it within the framework of a team driven by a common passion and arriving at a realization of near audio perfection; isn't this utopia ?

JMlab, insatiably researching into the technologies of tomorrow, drives the search for the "acoustic ideal" by pushing back "the walls of sound".

1980, the birth of the name, and straight away JMlab (Jacques Mahul Laboratories) began to demonstrate their spirit as researchers. It wasn't long before JMlab was to be considered like the very essence of French sound, subtly combining vibrancy with refinement and elegance.

1980-2000, twenty years over the course of which JMlab and sister company Focal have continued to introduce and develop numerous original concepts. From the twin voice coil to composite sandwich

cones, inverted dome tweeter to advanced magnet systems, the MVF double magnet system to digital DLP acoustic correction, each technological innovation has further refined sound quality and today contributes to the unique sonic signature of JMlab loudspeakers.

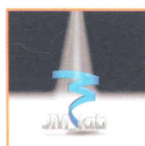
A large part of the international success of JMlab is also down to the understanding and expertise in the fabrication of every individual element of a loudspeaker; cabinet, drive units,... right down to the cone membrane and wire construction. The number of prestigious awards we have received from the international press only serves to reinforce our commitment to the spirit of sound which forms the base value of our company.

This is a value we would like to share with you; join us in taking a step towards utopia.

CHOOSING YOUR HOME CINEMA SYSTEM

JMLab have compiled a list of complete Home Cinema loudspeaker systems that we recommend. There are many solutions available, depending on each individual environment; floorstanders, standmounters, wall or stand mounting rear effects

loudspeakers, center channel placed on the TV... There are Four systems that each offer a balanced and coherent sound. You are invited to find this 'Casting System' on our internet site...



Focal-JMLab - 15, rue Jean-Claude Verpilloux - BP 201
42013 Saint-Etienne cedex 2 - France
Tél. : (33) 4 77 43 16 16 - Fax : (33) 4 77 37 65 87 - Internet : www.focal-jmlab.fr